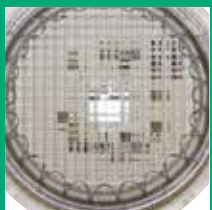
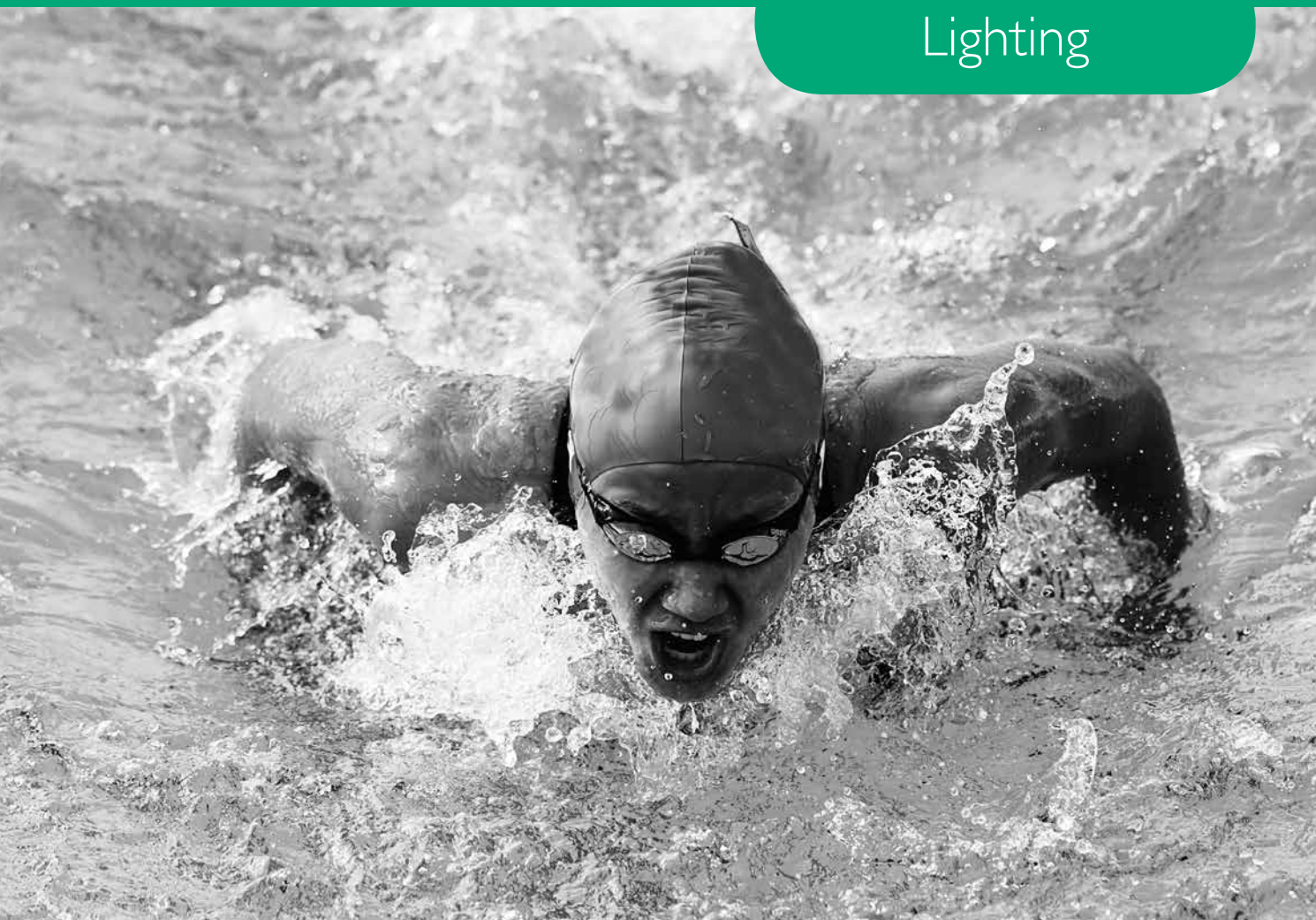


# Lighting



# Certikin Quick Change PU6 U/W Light - 300W

### Features

- No tools needed to change the bulb
- Ideal for gunite pools
- Vertical and horizontal cable exit
- Optional 316 stainless steel fascia ring

The Certikin Quick Change Underwater Light is a revolution in under water light design and features numerous benefits for the pool builder and customer alike.

The lamp holder of the light has no screws, nuts or bolts and is held in place with a threaded ring on a new purpose-made gasket. This means no tools are needed to change the bulb, thus reducing the bulb changing time.

The niche is now smaller in diameter and has an optional vertical and horizontal cable exit allowing greater flexibility of installation.

The niche can be fitted with a puddle flange for concrete pools, has a lower front edge to aid in gunite installations and has an adjustable front cover ring to allow variance in tiling and screeding depths.

The liner version comes with longer 2" screws to suit different panel and one-piece pool thicknesses.

Finally, an optional 316 stainless steel fascia ring is available to enhance the finish for any pool.



### PU6 Quick Change 300W U/W Light - C/W transformer & Deck Box

		Price
<b>B</b>	<b>PU61011C</b> Concrete pool U/W light complete	<b>£489.00</b>
<b>B</b>	<b>PU61011L</b> Liner pool U/W light complete	<b>£510.00</b>



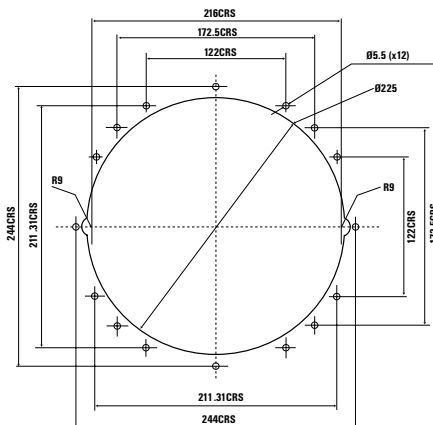
Light shown with optional SPC4756S Stainless Steel Face Plate.



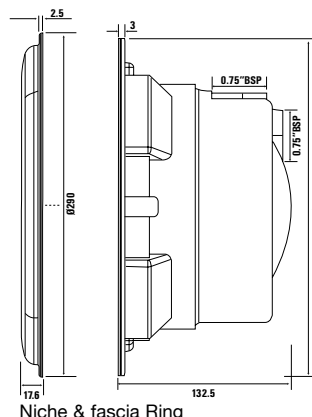
Light shown with optional CKSA011 Stainless Steel Face Plate. See page 23-27 for all available Stainless Steel fittings.

### PU6 Quick Change 300W U/W Light Components

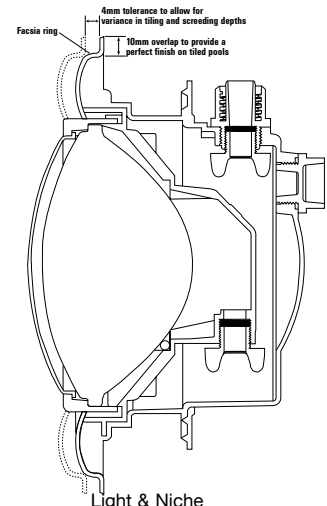
		Price
<b>A</b>	<b>PU6C</b> Concrete pool U/W light & niche	<b>£168.00</b>
<b>A</b>	<b>PU6L</b> Liner pool U/W light & niche	<b>£183.50</b>
<b>A</b>	<b>PU63</b> 300W 12V Quick Change Guts - 2.8m Cable	<b>£126.00</b>
<b>A</b>	<b>PU65</b> 300W 12V Quick Change Guts - 5m Cable	<b>£143.00</b>
<b>A</b>	<b>PU68</b> 300W 12V Quick Change Guts - 8m Cable	<b>£175.00</b>
<b>A</b>	<b>PU8</b> 300W 12V Replacement Bulb & 'O' Ring	<b>£35.25</b>
<b>A</b>	<b>SPC4756S</b> PU6 Stainless Steel Fascia Ring	<b>£57.95</b>
<b>A</b>	<b>SPC4756+B</b> PU6 Black Fascia Ring - Plastic	<b>£11.45</b>
<b>A</b>	<b>SPC4756+G</b> PU6 Grey Fascia Ring - Plastic	<b>£11.45</b>
<b>D</b>	<b>CKSA011</b> PU6 Stainless Steel Fascia - Square	<b>£112.00</b>



Panel Mount Cut Out Details



Niche & fascia Ring



Light & Niche

# Certikin Quick Change PU6 U/W Light - LED

## PU6 Quick Change LT White LED Lights

		Price
<b>C</b>	<b>PU6CLTW</b> LT LED Concrete Light & Niche - White	<b>£286.00</b>
<b>C</b>	<b>PU6LLTW</b> LT LED Liner Light & Niche - White	<b>£294.00</b>
<b>C</b>	<b>PU63LTW</b> LT LED White Light Guts - 2.8m Cable	<b>£243.00</b>
<b>C</b>	<b>PLQW0800N</b> LT LED White PAR56 Lamp Only	<b>£207.00</b>

## PU6 Quick Change LT Colour LED Lights

		Price
<b>C</b>	<b>PU6CLTC</b> LT LED Concrete Light & Niche - Colour Change	<b>£505.00</b>
<b>C</b>	<b>PU6LLTC</b> LT LED Liner Light & Niche - Colour Change	<b>£515.00</b>
<b>C</b>	<b>PU63LTC</b> LT LED Colour Change Light Guts - 2.8m Cable	<b>£456.00</b>
<b>C</b>	<b>PLQC0800</b> LT LED Colour Change PAR56 Lamp Only	<b>£368.00</b>

## LT LED Colour Change Controls

		Price
<b>C</b>	<b>PLBP100</b> Closed Push Button - Controls 1 Light	<b>£140.20</b>
<b>C</b>	<b>PLCB100</b> Control Panel / Receiver For Colour Change - Pre 2015 lights	<b>£270.00</b>
<b>C</b>	<b>PLRC100</b> Remote Control - Pre 2015 lights	<b>£130.00</b>
<b>C</b>	<b>SPLT2002</b> Control Panel Receiver - 2015 lights onwards	<b>£412.00</b>
<b>C</b>	<b>SPLT001</b> Remote Control - 2015 lights onwards	<b>£210.00</b>

## Certikin Ultra Bright LT LED Lights (Recommended for commercial pools)

The Ultra bright lamp offers greater light intensity and better power efficiency than the standard unit. Thanks to a new optic the projection of light is maximised, making the most of its intensity and reducing light loss and light pollution to a minimum.

### Specifications

- Power supply 12v AC
- Power consumption 58W (60VA)
- Output 4320 lumens (almost 3 times brighter than the standard unit!)

### High intensity LED lighting.

Environmentally friendly thanks to its long life (up to 100,000 hours) and high energy efficiency (uses 90% less power than a traditional lighting system)

### Specifications for PAR 56 lights

- Power supply 12v
- Power consumption 16W - white (24VA)
- Initial output 1485 (white) lumens
- IPX8 protection
- 24VA

### Colour

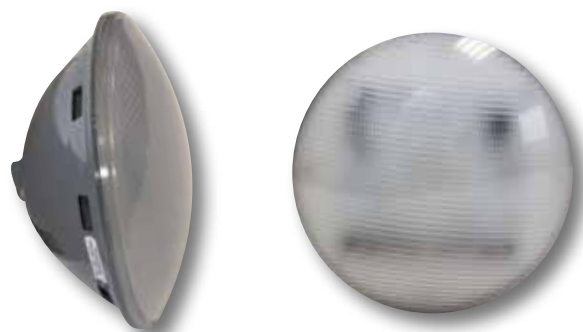
- Power supply 12v
- Power consumption 27W (37VA)
- Initial output 1100W

## PU6 Quick Change LT White - ULTRA BRIGHT LED Lights

		Price
<b>C</b>	<b>PU6CLTU</b> Ultra Bright LED Concrete Light & Niche - White	<b>£682.00</b>
<b>C</b>	<b>PU6LLTU</b> Ultra Bright LED Liner Light & Niche - White	<b>£678.00</b>
<b>C</b>	<b>PU63LTU</b> Ultra Bright LED Guts - 2.8m Cable	<b>£651.00</b>
<b>C</b>	<b>PLQW0800U</b> Ultra Bright LED PAR 56 Lamp Only - White	<b>£582.00</b>



PU63LTW



PLQW0800N / PLQC0800 - Lamp only



SPLT2002

SPLT001

### Transformer Usage Chart

Light Type	PU11060	PU11H	PU11S
300W sealed beam	0	0	1
LT White LED	1	4	12
LT Colour Change LED	1	2	7
Ultra Bright LED	0	1	4
Sylvania LED	1	3	10



For Transformers & Deck Boxes please see page 35

# Certikin Standard PU9 U/W Light - 300W Sealed Beam



PU9LS

## Features

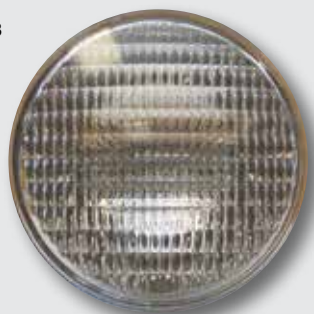
- Slim light & niche.
- Light internals 'guts' can be installed in older style light niches.
- Corrosion resistant front plate inserts made of brass / nickel.
- Micallef style gland inside the niche prevents water entering the conduit.
- IP68 rated built-in gland on the light housing eliminating the need for hot melt compounds.
- Locating lugs and combi housing screws make bulb changing easier.
- Threaded conduit fitting on back of niche to ease installation.
- Clip-on faceplate on liner light to cover unsightly screws.
- Easy to secure cover plates to finish off concrete pool light.
- Note - Old style 3/4" BSP threaded niches are available on request (SPC455T- concrete / SPC456T-liner).
- Vandal proof lens

Each light installation should have a minimum cable run of 5 metres from transformer to deck box.



PU93S

PU8



## PU9 Standard Sealed Beam U/W Light - C/W Transformer & Deck Box

		Price	
B	PU91011NC	Concrete pool U/W light complete	£510.00
B	PU91011NL	Liner pool U/W light complete	£538.00
B	PU91011NCL	Shuttered pool U/W light complete	£585.00

**BULK BUY**

## BULK BUYS - PU9 Standard Sealed Beam U/W Light

		Price	
B	PU91011NC/2	Pack of 2 x concrete U/W lights complete - C/W deck box & transformer	£982.00
B	PU91011NL/2	Pack of 2 x liner U/W lights complete C/W deck box & transformer	£1043.00



PU9CS

## PU9 300W Sealed Beam Light & Niche

		Price	
A	PU9CS	Concrete pool U/W light & niche	£192.00
A	PU9LS	Liner pool U/W light & niche	£222.00
A	PU9CLS	Shuttered pool U/W light & niche	£283.00

## PU9 300W Sealed Beam Light Components

		Price	
A	PU93S	300W 12v PU9 guts - 2.8m cable	£151.00
A	PU95S	300W 12v PU9 guts - 5m cable	£175.00
A	PU98S	300W 12v PU9 guts - 8m cable	£202.00
A	PU8	300W 12v replacement bulb & 'O' ring	£35.25
A	PU8/12	PK of 12 x 300W 12v replacement bulb & 'O' ring	£390.00
A	PU7	120W x 12v replacement bulb & 'O' ring	£79.00

## Accessories / Spares For PU9 U/W Lights

		Price	
A	PU15C	Impact resistant lens - clear	£12.15
B	PU9V	Light cable vulcanised sealing kit	£48.00
A	SPC464	15m coil flexible conduit	£70.00

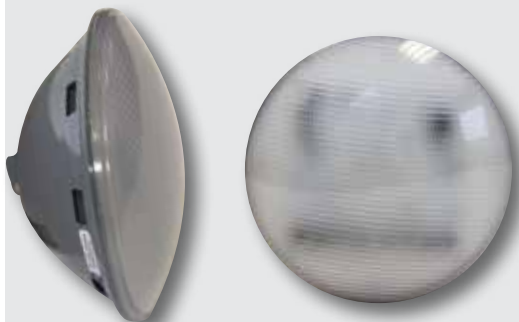
## Transformer Usage Chart

Light Type	PU11060	PU11H	PU11S
300W sealed beam	0	0	1
LT White LED	1	4	12
LT Colour Change LED	1	2	7
Ultra Bright LED	0	1	4
Sylvania LED	1	3	10

# Certikin PU9 Standard U/W Lights - LED - White & Colour Change

## PU9 Standard LT White LED Lights

		Price
<b>C PU9CLTW</b>	LT LED Concrete light & niche - white	<b>£290.00</b>
<b>C PU9LLTW</b>	LT LED Liner light & niche - white	<b>£308.00</b>



PLQW0800N / PLQC0800 - Lamp only

## PU9 LT White LED Light Components

		Price
<b>C PU93LTW</b>	LT LED White light guts - 2.8m cable	<b>£252.00</b>
<b>C PLQW0800N</b>	LT LED White PAR56 lamp only (No 'O' ring) - 27W	<b>£207.00</b>

## PU9 LT White - ULTRA BRIGHT LED Lights

		Price
<b>C PU9CLTU</b>	Ultra Bright LED Concrete light & niche	<b>£687.00</b>
<b>C PU9LLTU</b>	Ultra Bright LED Liner light & niche	<b>£699.00</b>
<b>C PU93LTU</b>	Ultra Bright LED PU9 Guts C/W 2.8m Cable	<b>£658.00</b>
<b>C PLQW0800U</b>	Ultra Bright LED PAR56 white lamp only - 58W	<b>£582.00</b>

## PU9 Standard LT Colour Change LED Lights

		Price
<b>C PU9CLTC</b>	LT LED Concrete light & niche - colour change	<b>£494.00</b>
<b>C PU9LLTC</b>	LT LED liner light & niche - colour change	<b>£499.00</b>

## PU9 LT Colour Change LED Light Components

		Price
<b>C PU93LTC</b>	LT LED Colour change light guts - 2.8m cable	<b>£447.00</b>
<b>C PLQC0800</b>	LT LED Colour change PAR56 lamp only (No 'O' ring) - 27W (37VA)	<b>£368.00</b>

## LT LED Colour Change Controls

		Price
<b>C PLBP100</b>	Closed push button - controls 1 light	<b>£140.20</b>
<b>C SPLT2002</b>	Control Panel Receiver - 2015 lights onwards	<b>£412.00</b>
<b>C SPLT001</b>	Remote Control - 2015 lights onwards	<b>£210.00</b>
<b>C PLCB100</b>	Control panel / receiver for colour change - Pre 2015 lights	<b>£270.00</b>
<b>C PLRC100</b>	Remote control for control panel - Pre 2015 lights	<b>£130.00</b>

## LED Flat Light

		Price
<b>C PLFW080C</b>	LED flat light - white - concrete	<b>£320.00</b>
<b>C PLFW080P</b>	LED flat light - white - liner	<b>£330.00</b>



PU9CLTW / PU9CLTC



SPLT001



PU93LTW



SPLT2002

### Transformer Usage Chart

Light Type	PU11060	PU11H	PU11S
300W sealed beam	0	0	1
LT White LED	1	4	12
LT Colour Change LED	1	2	7
Ultra Bright LED	0	1	4
Sylvania LED	1	3	10

PLFW080C /  
PLFW080P



# Sylvania Colour Change LED Lights



The Sylvania PAR56 LED represents an economical, top class professional development for underwater illumination of swimming pools and fountains. By combining high power LEDs of red, green, blue & fixed white colours together with an internal microprocessor, it is capable of generating the full spectrum of colours. The lamp can be operated in a mode of continuous colour changing, or fixed at any desired colour by briefly switching off and back on again. This is facilitated by the optional Sylvania remote control and receiver.

### Features

- High power LED retrofit for incandescent PAR lamps
- Produces full spectrum of rich colours or white (multi colours)
- Simple on/off switching sets colour changing or fixed mode (can be achieved by using a standard switch)
- Optional Sylvania remote control and receiver available
- Identical shape to incandescent PAR56 = easy retrofit
- Unique sealing method guarantees IP68 water-tightness
- Chlorine-resistant materials permits use in swimming pools
- Long lamp lifetime >25.000 hours
- Low heat generation
- 12W, 12V, 2.75 Amps
- Beam angle 40°

### Transformer Usage Chart

Light Type	PU11060	PU11H	PU11S
300W sealed beam	0	0	1
LT White LED	1	3	10
LT Colour Change LED	1	2	7
Ultra Bright LED	0	1	4
Sylvania LED	1	3	10

Receiver



Controller



### PU9 Sylvania Colour Change LED Lights

		Price
<b>C</b>	<b>PU9SCC</b> PU9 Colour change LED light & niche - concrete	<b>£313.00</b>
<b>C</b>	<b>PU9SCL</b> PU9 Colour change LED light & niche - Liner	<b>£330.00</b>

### PU6 Sylvania Colour Change LED Lights

		Price
<b>C</b>	<b>PU6SCC</b> PU6 Colour change LED light & niche - concrete	<b>£302.00</b>
<b>C</b>	<b>PU6SCL</b> PU6 Colour change LED light & niche - Liner	<b>£323.00</b>

### Sylvania Colour Change LED Light Components

		Price
<b>C</b>	<b>PU9S3</b> PU9 Colour change LED guts with 2.8m cable	<b>£297.00</b>
<b>C</b>	<b>PU6S3</b> PU6 Colour change LED guts with 2.8m cable	<b>£292.00</b>
<b>C</b>	<b>PU8SC</b> Colour change LED lamp unit only	<b>£237.00</b>

### Sylvania Remote Control

		Price
<b>C</b>	<b>PU9SR</b> Colour change LED remote control unit	<b>£17.70</b>
<b>C</b>	<b>PU9SRR</b> Colour change LED receiver unit	<b>£28.30</b>

The PU9SR and PU9SRR - can control upto 20 lights / max range 20 metres.

# Certikin Transformers, Underwater Speakers & Deck Box



Deck Box		Price
<b>A PU10N</b>	Deck Box	<b>£20.60</b>
<b>E PU10NLB</b>	Deck Box - C/W Lid light - Blue (WSL)	<b>£61.50</b>
<b>E PU10NLW</b>	Deck Box - C/W Lid light - White (WSL)	<b>£61.50</b>
<b>A PU10N+G</b>	Deck Box - Graphite	<b>£29.50</b>

Deck Box Lid Light		Price
<b>E SPC479B</b>	Deck box lid light only - Blue (WSL)	<b>£54.50</b>
<b>E SPC479W</b>	Deck box lid light only - White (WSL)	<b>£54.50</b>

Transformer		Price
<b>B PU11H</b>	Certikin 120VA 12v IP65 Transformer	<b>£230.00</b>

Transformer		Price
<b>B PU11S</b>	Certikin 300W 12v IUP65 400VA Transformer	<b>£327.00</b>

Transformer		Price
<b>E PU11060</b>	Transformer PVC case - 60VA	<b>£69.00</b>

Safety Transformers		Price
<b>B PU11120TY</b>	Safety transformer 120VA	<b>£180.00</b>
<b>B PU11350TY</b>	Safety transformer 350VA	<b>£270.00</b>

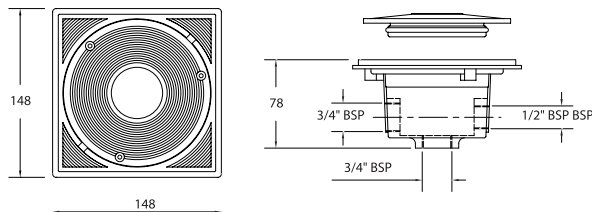
### Transformer Usage Chart

Light Type	PU11060	PU11H	PU11S
300W sealed beam	0	0	1
LT White LED	1	4	12
LT Colour Change LED	0	2	7
Ultra Bright LED	1	1	4
Sylvania LED	1	3	10

Miscellaneous Light Parts		Price
<b>E AP791081</b>	100W Amprod Spa bulb	<b>£67.00</b>

Under Water Speakers		Price
<b>E SL600UC</b>	U/W Speaker - rated power Impedance 8ohms 20W - C/W 10m cable	<b>£596.00</b>

Under Water Speaker Transformer		Price
<b>E SL600TC</b>	Isolating transformer (must be used with every speaker)	<b>£138.50</b>



This is a very ingenious but simple design. It replaces the existing lid of a Certikin deck-box and converts it to an attractive LED ground light. Designed for new builds or retro-fits, it's effortlessly installed in just a couple of minutes. Available in blue and white, it includes one lid-light, one large and one small 'O' ring. The electrical power loading is very low (approx 2.5 Watt ) and will put no significant extra load on the transformer.



PU11H



PU11S



PU11060



PU11120TY



PU11350TY

AP791081



SL600TC

SL600UC



Underwater speakers should be driven by an amplifier of a suitable size, please consult a Hi-fi specialist to ensure correct sizing.

# niveko

CUSTOM BUILT MONOPOOLS

**Bespoke** monopools  
Seven **state-of-the-art** pool types  
Made from **Polystone®** in six colours,  
exclusive to NIVEKO



[www.niveko-pools.com](http://www.niveko-pools.com)

With 20 years of **experience** and more than 70 **qualified** employees, NIVEKO make more than 450 bespoke pools every year and has gained the **confidence** of customers all over Europe. Thanks to the continuous monitoring of **design** trends and use of cutting edge **technology**, NIVEKO has become a synonym for a pool of uncompromising **quality**.

Every NIVEKO pool is designed and made to the owner's exact requirements and is factory tested before despatch. Delivery is no problem as NIVEKO pools can be transported in sections for assembly on site where access is tight.



[info@niveko-pools.com](mailto:info@niveko-pools.com), [www.niveko-pools.com](http://www.niveko-pools.com)

NIVEKO s.r.o., U Dvora 219, 687 51 Nivnice, Czech Republic



# LumiPlus Mini LED Lights

The LumiPlus Mini LED light range with more illumination intensity, higher quality and energy efficiency. LumiPlus Mini LEDs are offered in pure white finish and stainless steel effect featuring in-mould decoration methods to create the perfect stainless steel look. Colour change versions are compatible with the existing PLRC100 controller and PLRC100 remote control.

Supplied as standard with 2.5m cable (other lengths are available to order). The LumiPlus Mini LED is best installed via the LTHD900 wall conduit but can also be simply fitted into 63mm pipe using the adaptors supplied.



## LumiPlus Mini LED Lights - White

		Price
<b>C IG0502WPR</b>	White Mini LED light - white face plate	<b>£227.00</b>
<b>C IG0502WIR</b>	White Mini LED light - S/S effect face plate	<b>£257.00</b>



## LumiPlus Mini LED Lights - Colour

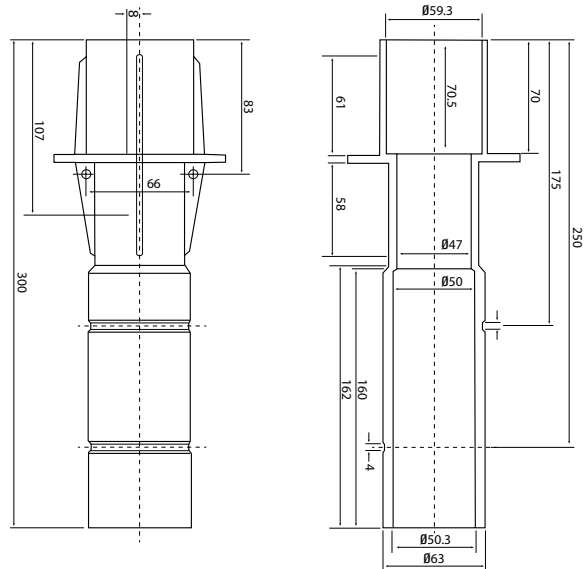
		Price
<b>C IG0502MPR</b>	Colour Change Mini LED light - white face plate	<b>£252.00</b>
<b>C IG0502MIR</b>	Colour Change Mini LED light - S/S effect face plate	<b>£282.00</b>

## LumiPlus Mini LED Light Accessories

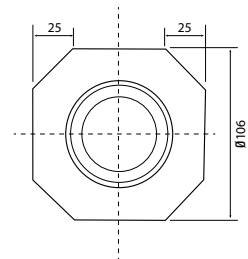
		Price
<b>C LTHD900</b>	Wall conduit for LumiPlus lights - push fit 50mm ID / 63mm OD	<b>£10.70</b>
<b>C IG0883P</b>	Liner niche for LumiPlus lights	<b>£58.50</b>

## LumiPlus Mini LED Light Accessories

		Price
<b>C SPLT2002</b>	Control panel / receiver for colour change LED - 2015 onwards	<b>£412.00</b>
<b>C SPLT001</b>	Remote control for control panel - 2015 onwards	<b>£210.00</b>



LTHD900



SPLT2002



SPLT001

## Installation Options



To be installed in Ø63  
PN6 and PN10 pipes /  
wall conduits



To be installed in liner pools

# Hugo Lahme Lights & Mini LED Lighting



HL4320220



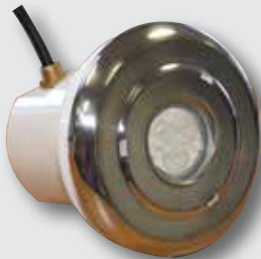
HL4131N



HL4330050  
HL4330150



SPU81



PLSW300CX



PLSW100WX-2

## Mini ABS LED Lights

		Price
C	<b>LTHD900</b> Wall conduit - push fit	£10.70
C	<b>PLSC100W-2</b> Light - multicolour - ABS faceplate - push fit	£335.00
C	<b>PLSW100W-2</b> Light - white - ABS faceplate - push fit	£315.00
C	<b>PLSC100WX-2</b> Light - multicolour - stainless steel faceplate - push fit	£335.00
C	<b>PLSW100WX-2</b> Light - white - stainless steel faceplate - push fit	£355.00
C	<b>PLSC200S-2</b> Light - multicolour - spas/prefabricated pools - ABS faceplate	£315.00
C	<b>PLSW200S</b> Light, white - spas/prefab pools - ABS faceplate	£315.00
C	<b>PLSC200SX-2</b> Light - multicolour - spas/prefabricated pools - s/steel faceplate	£322.00
C	<b>PLSW200SX-2</b> Light - white - spas/prefabricated pools - s/steel faceplate	£335.00
C	<b>PLSC300C</b> Light - multicolour - concrete	£340.00
C	<b>ZZPLSW300C</b> Light - white - concrete	£340.00
C	<b>PLSC300CX</b> Light - multicolour - concrete - s/steel faceplate	£350.00
C	<b>PLSW300CX</b> Light - white - concrete - s/steel faceplate	£300.00
C	<b>PLCB200</b> Control panel for Mini multicolour lights (to suit 4 core cable lights)	£557.00
A	<b>SPC465M</b> 1m flexible conduit with metric thread	£5.65

### Specifications for MINI Lights

2 x 2 LED's (blue / green ) plus 1 x 1W (red)

The Mini control panel features an integral transformer and can be connected directly to the mains. It also features a push button controller to alternate between 6 set colours and 6 sequences. Each Mini control panel will synchronise up to 4 lights. For multiple light systems, please contact us for a quotation.

## Hugo Lahme Underwater Lights

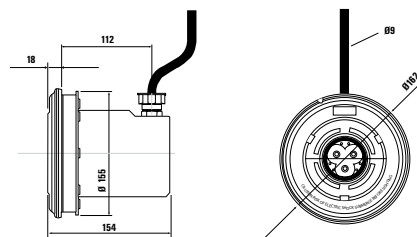
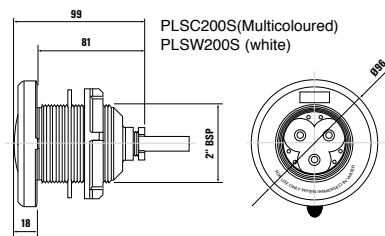
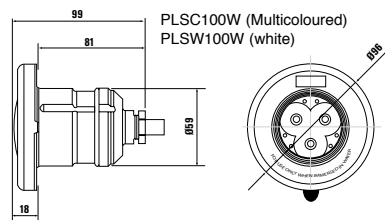
		Price
E	<b>HL4320220</b> White LED light guts (to suit HL4131N niche)	£645.25
E	<b>HL4330050</b> LED power supply for up to 4 LED lights	£645.25
E	<b>HL4330150</b> LED power supply for up to 8 LED lights	£674.00
E	<b>HL4130</b> 50W Halogen light for GRP / Prefab	£409.00
E	<b>HL4131</b> 50W Halogen light guts for concrete pools	£409.00
E	<b>SPU81</b> 50W Halogen Dichroic bulb only	£13.60
E	<b>HL4131N</b> Light niche for concrete pools	£226.50
E	<b>ZZ4135</b> 50W Halogen light for GRP complete (inc light & transformer)	£459.00
E	<b>ZZ4130</b> 50W Halogen light for concrete complete (inc light, niche, deck box & Transformer)	£731.00
E	<b>PU11060</b> Transformer PVC case - 60VA (suitable for Halogen HL lights)	£69.00



PLSC300C



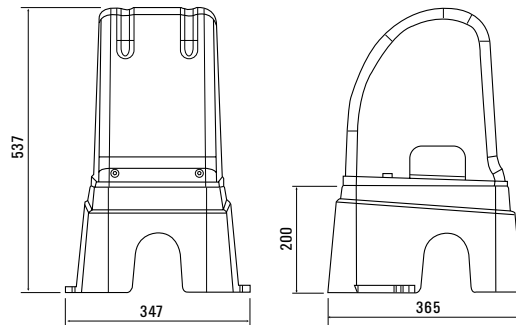
PLSC100W





## Fibre Optic Generators

			Price
H	LT8501001	HM Series generator / illuminator 8 colours 150W	£1465.00
H	LT8501002	H Series generator / illuminator 8 colours 250W	£1185.00
H	LT8501502	Spare bulb 250W for H generator (halogen 1000 hrs life approx)	£52.65



## Fibre Optic Lighting

There are two types of fibre optic cable: end transmission cables and side transmission cables also known as perimeter fibre cables. The end transmission cables transport light from the generator to different receiver elements, such as wall lights, waterfalls, stars etc. They are manufactured with a black PVC cover indicating the number of fibres. Perimeter fibre cables are manufactured with a transparent cover and have the special feature of transmitting light along their whole length.

## Side Emitting Optic Cable - For Perimeter Lighting

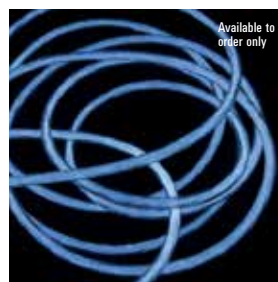
			Price
H	LT8501140	42-fibre, cabled fibre. per metre. (if over 45m use 2 light generators)	£26.50



**Guide tracks for Fibre Optic Lighting**  
The guide rails enable the perimeter fibre to be installed around the pool. They are flexible for easy installation and manufactured in transparent PVC

## Guide Tracks For Perimeter Fibre

			Price
H	LT8501161	15m track for 42 strand cable - concrete pool	£94.00
H	LT8501162	15m track for 42 strand cable - new pool	£122.00
H	LT8501163	15m track for 42 strand cable - liner pool	£97.00
H	LT8501164	50m track for 144-fibre cable, code 8501155	£390.00
H	LT8501165	50m track for 80-fibre cable, code 8501160	£481.00



SPECIALISTS IN  
PUMPS FOR SWIMMING POOLS



## GIANT SERIE HIGH EFFICIENCY

With  
IE3 or IE4  
Motor

**In constant evolution: Innovative technology with  
the best performance in the market**



For each unit of **GIANT** model sold to our customers, PSH makes a donation to the Project:  
*"Una onada de petits comriures"* [www.unaonadadepetitscomriures.com](http://www.unaonadadepetitscomriures.com)

- Patented technology: logarithmic volute shaped body with one-piece helical impeller.
- Suitable for all kinds of water.
- Totally resistant to corrosion.
- High hidraulic efficiency.
- Fully removable and recyclable.

3000 rpm

From 4HP up to 12.5 HP

Flow rate: up to 200 m<sup>3</sup>/h

Plastic or bronze impeller

Best solution for aquariums (plastic serie)

### GIANT



### GREAT GIANT



1500 rpm

From 4HP up to 15 HP

Flow rate: up to 260 m<sup>3</sup>/h

Bronze impeller

Complement your pool pumps with our  
GIANT PSH prefilters serie



SMALL GIANT



GIANT



GREAT GIANT



Creating harmony with nature: ecological and sustainable

C/ Antoni de Borja 7, Entlo 1<sup>a</sup> · 08191 Rubí (Barcelona), Spain  
Tel. + 34 93 377 40 66 · Fax +34 93 377 55 01 · [info@bombaspsh.com](mailto:info@bombaspsh.com)  
[www.bombaspsh.com](http://www.bombaspsh.com)

MANUFACTURED IN  
BARCELONA